



# CONCRETE ON A ROLL

INSTALLATION & MAINTENANCE



[WWW.EARTHANATOMY.CO.UK](http://WWW.EARTHANATOMY.CO.UK)

## WHAT TO HAVE READY

Adhesive	Roller/brush	Masking Tape
Sandpaper	Sponge	Joint filler (provided)
Cutting tools	Tape measure	Indoor Glue

## PREPARATION

1

**Test the substrate:** Before processing, check to ensure that the substrate is suitable for the intended application. The substrate must be dry, stable and dust-free, clean and smooth.

**Tips:** Prepare Walls and use a Primer if required to enable adhesive bond to the surface. Old layers that are load bearing, wall covering and adhesive residue from previous wallpapering must be removed. Rough surfaces, holes and unevenness should be filled with a gypsum based filler.

**BEFORE UNROLLING:** The material needs to be stored at room temperatures (+18°C) prior to unrolling for at least 24 hours. If this is not possible, we recommend warming the material with an air heat source whilst unrolling, always handling with care as the material is more brittle in colder temperature and may tear.

**Room Planning:** The Material is handmade and has natural variations in appearance, it is important to unroll as many sheets as possible on a clean surface to visually plan which rolls are to be hung next to each other.



2

**Layout:** Think about windows/ doors and how stone would be cast/cut i.e. no joints over heads, think about where you start the first roll so you don't end up with uneven wall/slabs.

**Tools:** The material can be cut easily using a cutter knife. On thicker surfaces a heat gun will ease this process. The material when bonded on MDF can be processed using standard carbide tools.



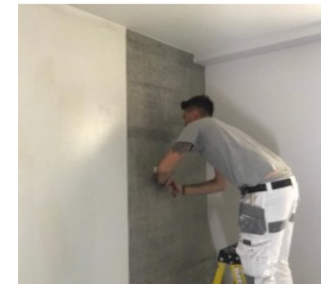
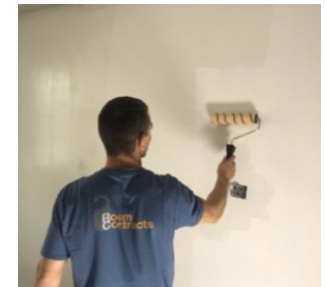
## BONDING

3

**Supplied adhesive:** For indoor basic installation on sealed appropriate surfaces, using our glue mix with 2.5 litres of water, leave for 15 mins, then mix again, until you get a jelly mass. Use a roller/ brush to cover wall area and the back of your roll.

**Alternative Adhesives:** Heavy weight wallpaper adhesive for surfaces that are sealed or require additional bond strength i.e. Murabond Sealed Surface, Contact adhesives: useful for curved surfaces, PVA: for pressing panels

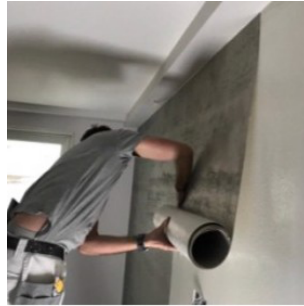
**Bonding around 90° corners:** Corners can be bonded with a mitre finish and joint paste, or folded around edges with the use of a heat source (using a contact adhesive can aid this process). This helps to avoid cracking on the folded corners, the material should be heated using the heat source on the lowest power mode and no longer than 10 seconds on the same spot. Support the corners with masking tape while adhesive cures.



## INSTALLING

4

Hang Roll from the top/ let roll down the wall ensuring roll is fixed at the top. Apply pressure to surface with roller / wallpaper applicator Cut roll length at bottom using a Staley knife/ ensure roll is stuck. Sweep your hand over the surface or use a pressure roller to ensure and remove any air pockets. This check should be performed repeatedly, to ensure that the full surface of the material is bonded.



Tips: We recommend to use a roller when pressing to remove air pockets. Repeat process until walls are covered

## FILLING JOINTS

5

Each roll is supplied with joint paste for joint line and edges.

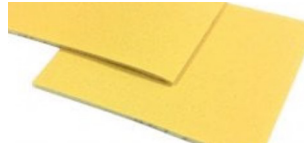
Tips: Apply masking tape down the joints approx. 3-5mm gap to a desired look. Apply joint paste using spatula and peel off masking tape whilst paste is wet. Repeat over all joints/ around edges.



## SCRATCHING/SANDING

6

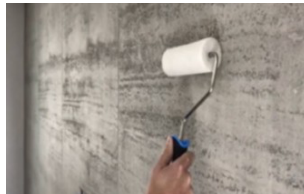
Using a 240 grit foam pad the surface can be scratched so that the material is characterised and to reduce any raised areas.



## SEALING

7

In wet zones or heavy-duty surroundings it is necessary to use a sealer on the surface (Aquatec Low Sheen) Apply using a foam roller/pad, NOT to be used on Rust Surfaces.



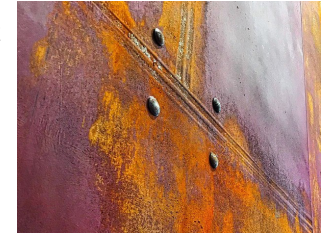
## ADDITIONAL SURFACE SEALING/TREATMENTS

8

Plain Colours: A water-based colour wash can be used to harmonise the joints/roll colours, bringing your own ideas and vision in the surface.

Rusts: Our products are made from real iron/ rust, a natural product, it will therefore have designs by nature. A PVA/Water sealer spray can be used to increase surface protection but please note colour will change so a trial should be conducted.

Black Slate/Fire Plank: Matt Black Wash to harmonise the colouring can be applied so



*Note: The above information are general recommendations. The working conditions beyond our control exclude any claim from this information. In case of doubt, we recommend that you conduct sufficient for applying the rolls.*